



REO SERIES™

*AN-DBP-062a: Configuring CommVault
QiNetix 5.9 and Windows Server 2003
with Fibre Channel-Connected REO
VTL*



ALWAYS THERE.

Preface

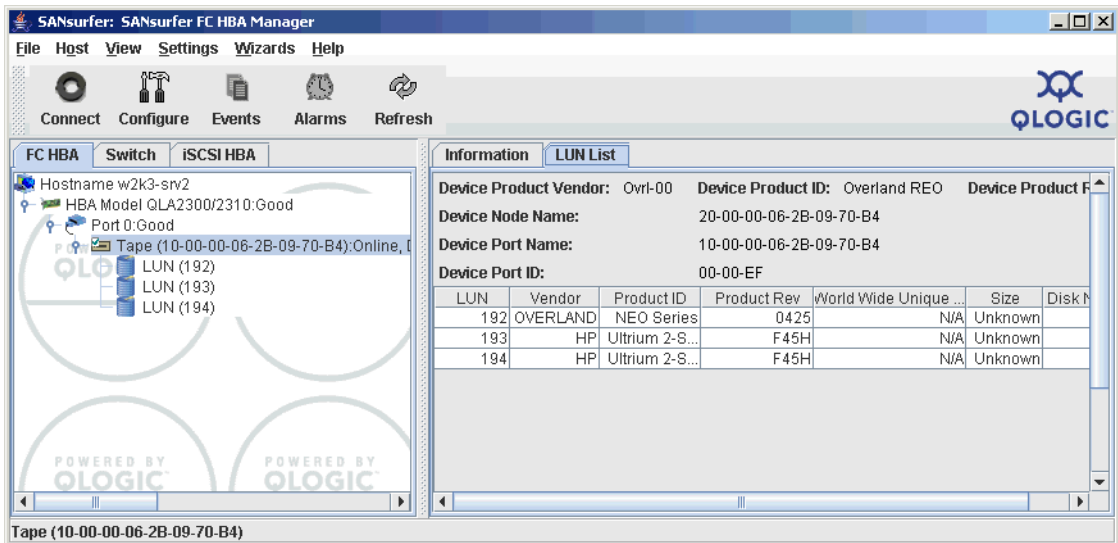
This document assumes that you have already set up and configured your REO. For more information, see the Setup Guide that came with your appliance.

This document describes how to configure a REO virtual tape-library (VTL) via Fibre Channel (FC) that uses a QLogic host bus adapter (HBA) with Windows Server 2003 and CommVault QiNetix 5.9. In documenting this process, Overland used the QLA2310 HBA.

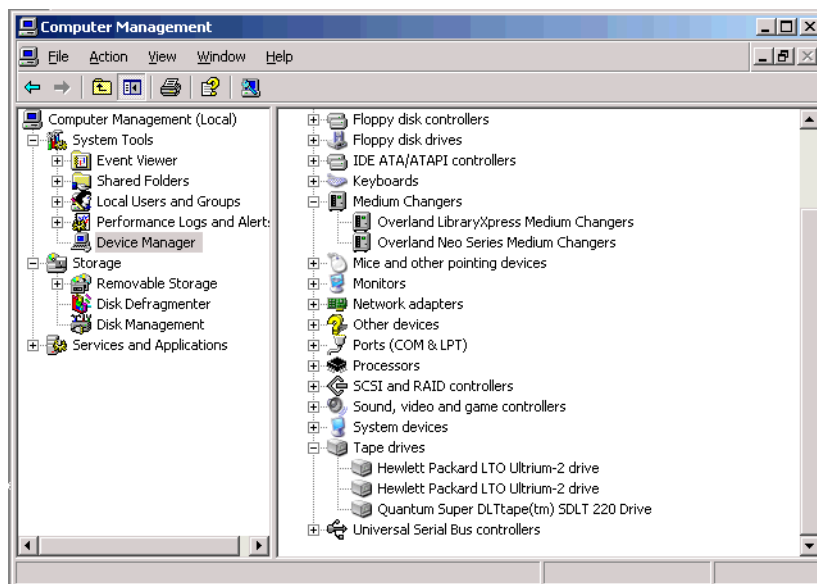
Verifying that the HBA and Windows Recognize the VTL

The following assumes that the REO is directly connected to the Windows Server.

- 1 Start the SANsurfer utility, and verify that the **OVERLAND NEO Series** and associated tape drives (HP Ultrium 2-SCSI) are present.

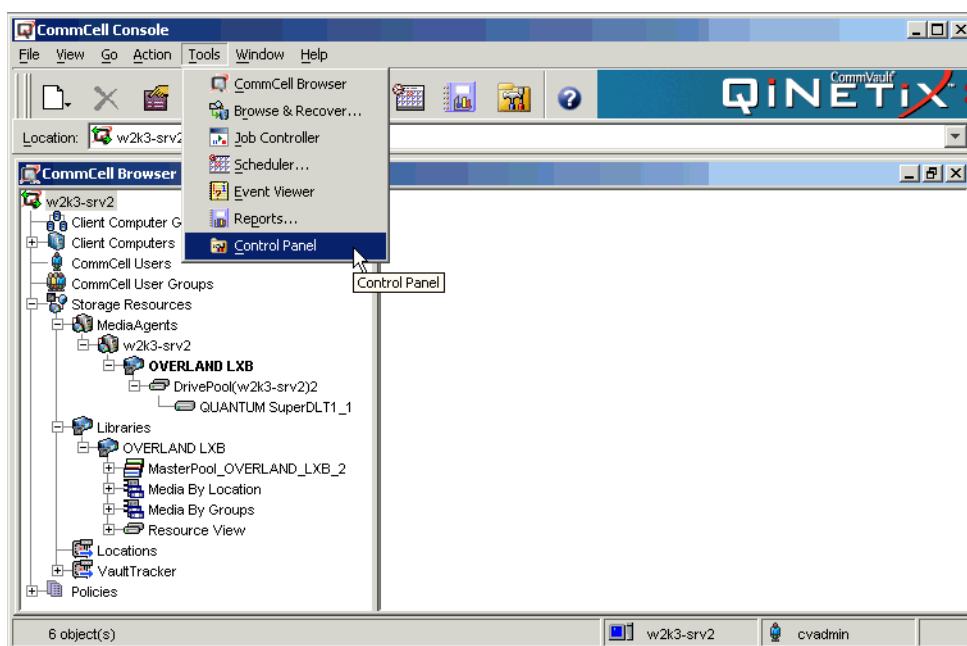


- 2 Launch the Windows **Computer Management** program, click **Device Manager**, and make sure that the Overland NEO SERIES Library and HP LTO Ultrium-2 Drives are listed.

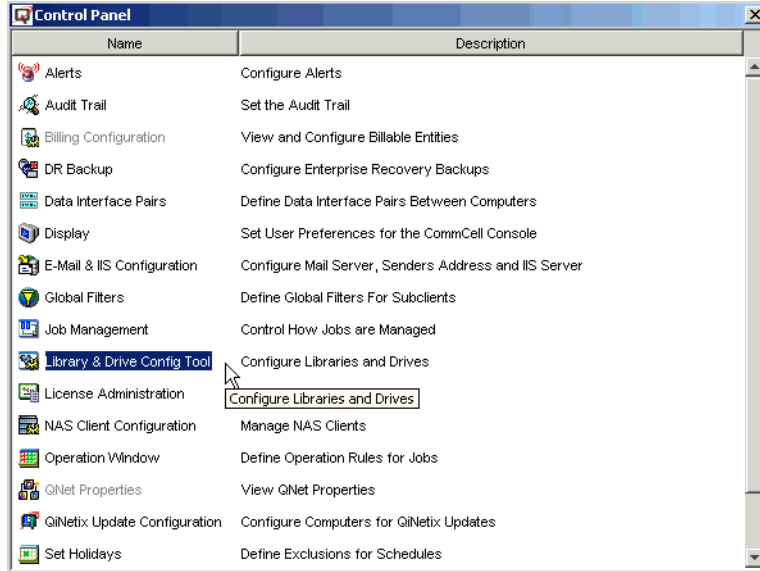


Configuring the REO VTL with QiNetix

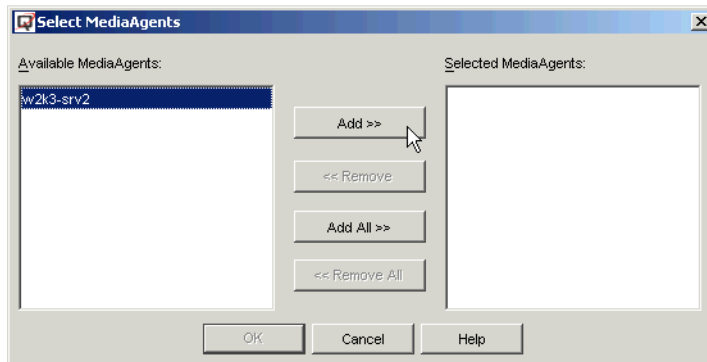
- 1 Start CommCell Console, and select **Control Panel** from the **Tools** menu.



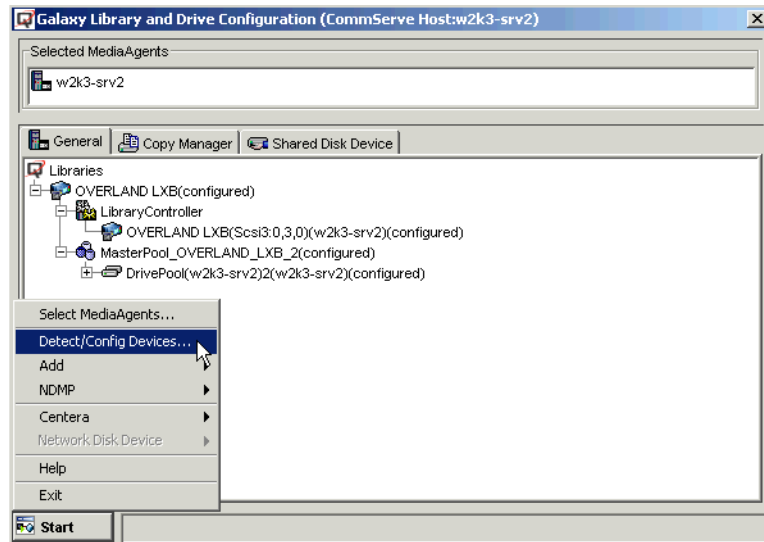
2 Click Library & Drive Config Tool.



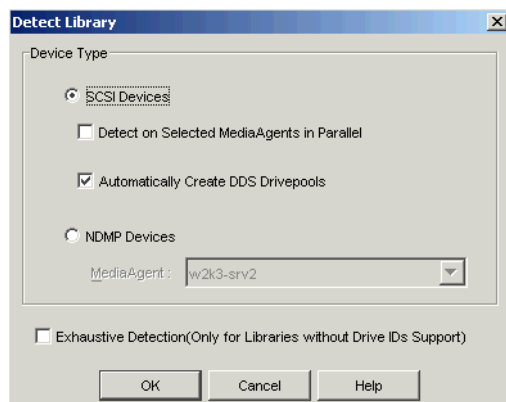
3 Select the host server, click **Add**, and then click **OK**.



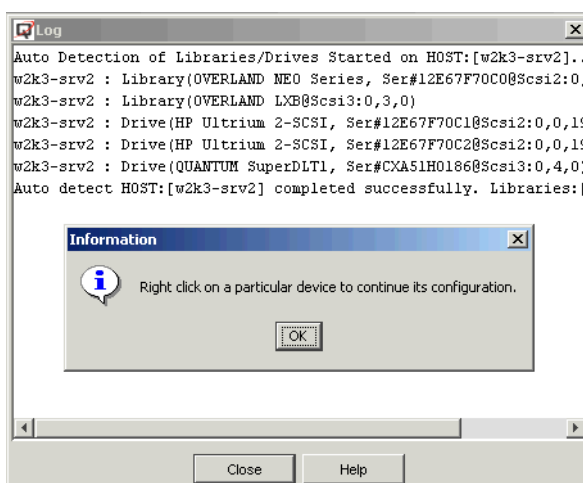
4 Click **Start**, and select **Detect/Config Devices**.



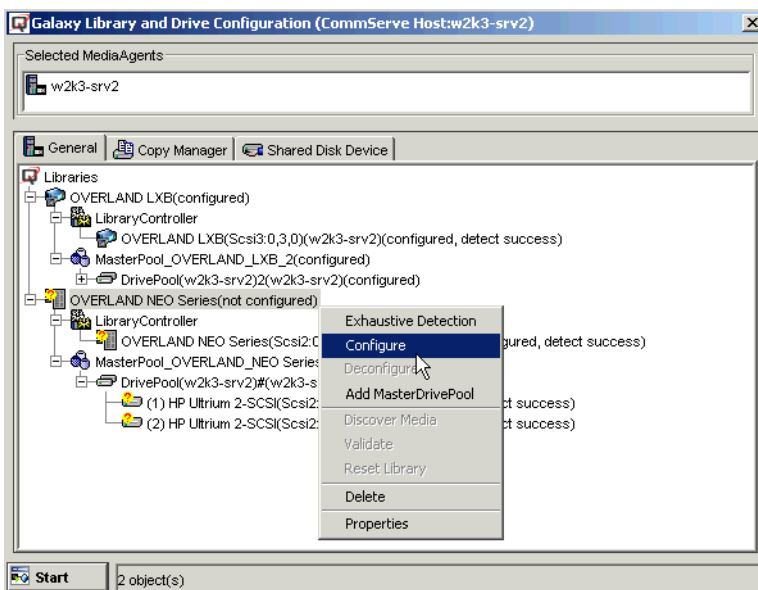
5 Click **OK** to continue the scan.



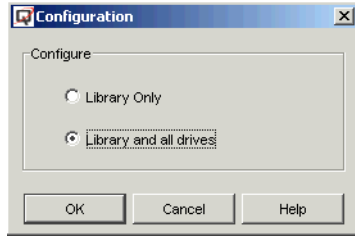
6 Click **OK**, and then click **Close**.



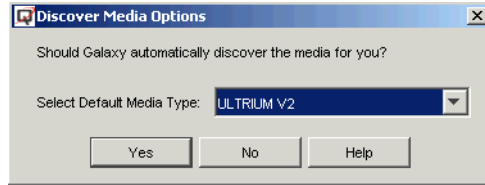
7 On the **General** tab, right-click the **OVERLAND NEO Series**, and select **Configure**.



8 Select **Library and all drives**, and click **OK**.

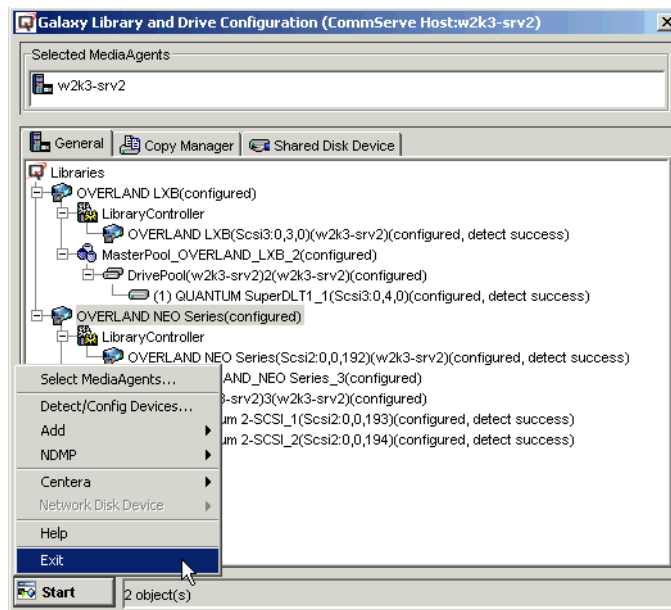


9 When the **Discover Media Options** dialog box appears (with the default of **ULTRIUM V2** selected), click **Yes** to continue.

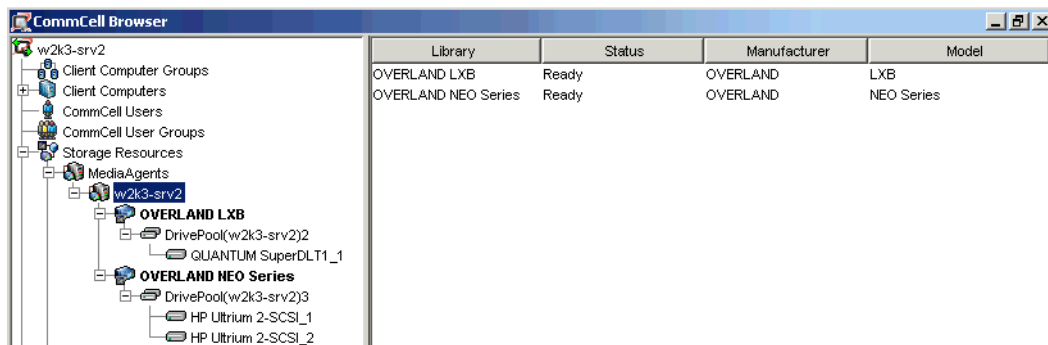


The REO VTL and associated drives are now configured.

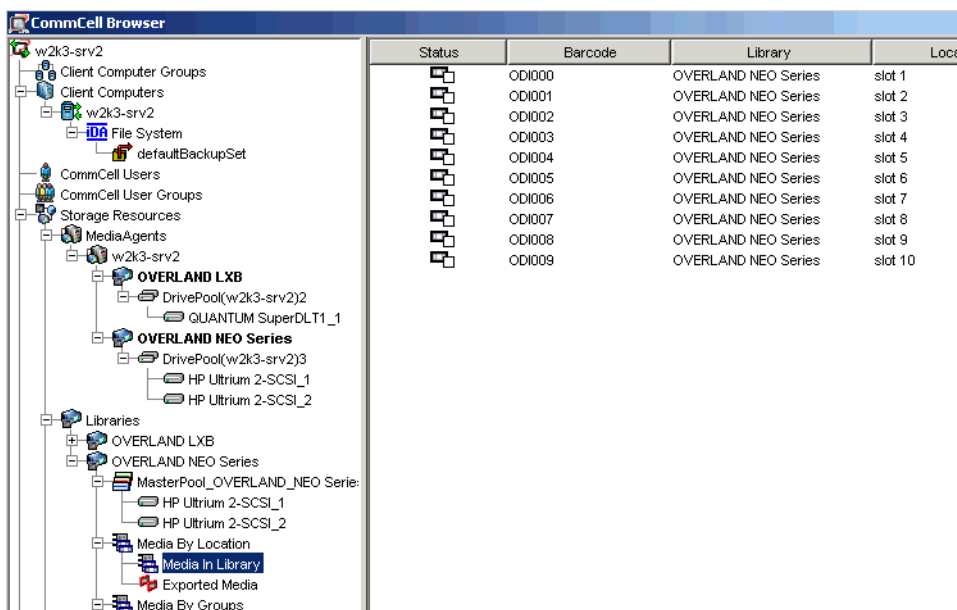
10 Click **Start**, and choose **Exit**.



11 In CommCell, verify that the Status for the **OVERLAND NEO Series** is **Ready**.

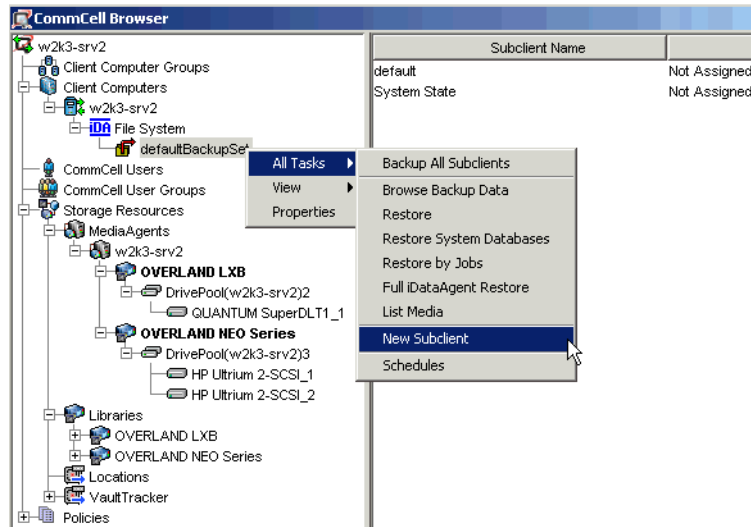


12 Verify that all virtual media (slots) appear under the **Libraries** and **Media in Library** view.

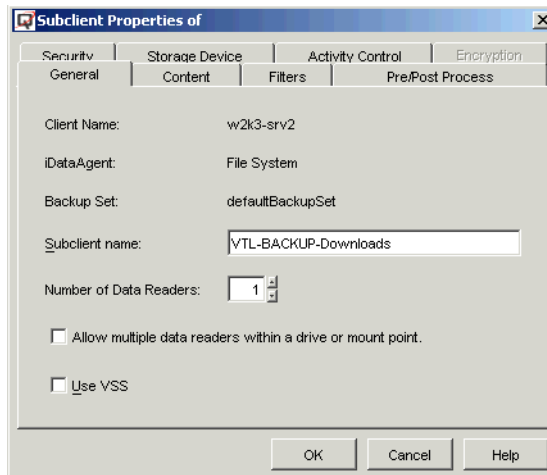


Configuring a Backup Job

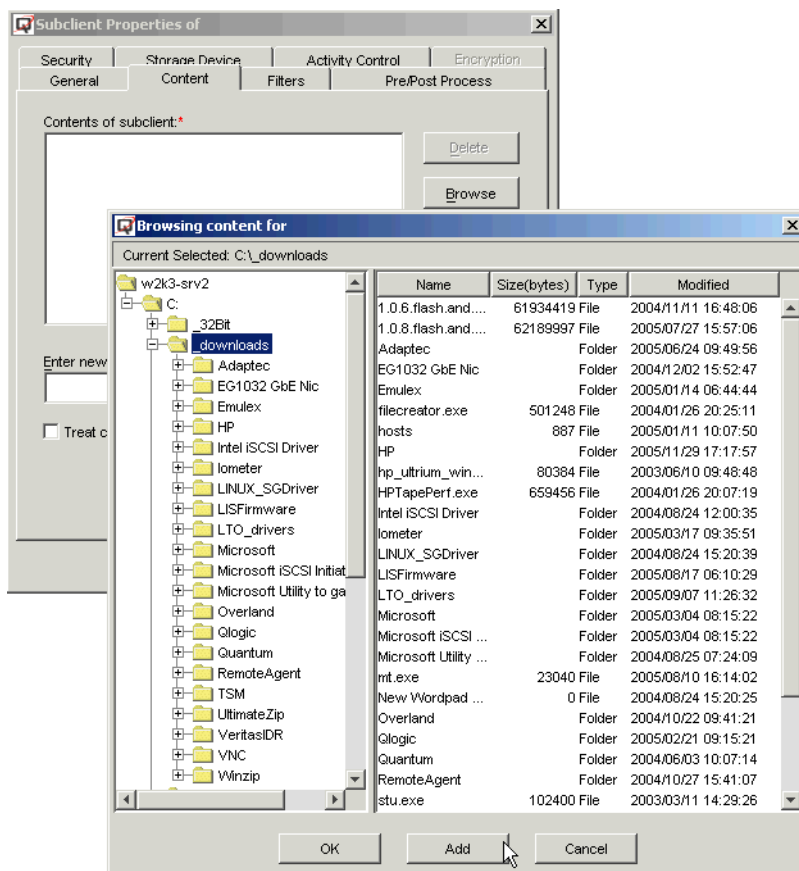
- 1 Right-click **defaultBackupSet**, select **All Tasks**, and then select **New Subclient**.



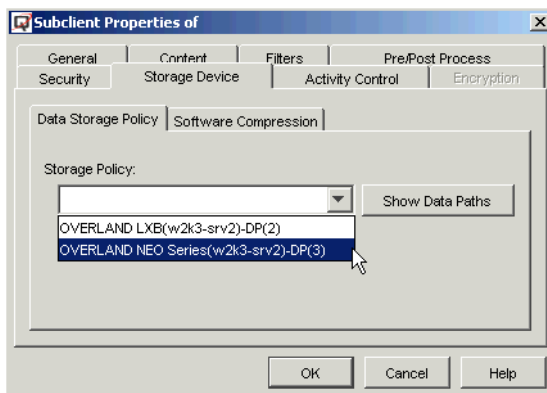
- 2 In the **Subclient name** box, type a name for this job.



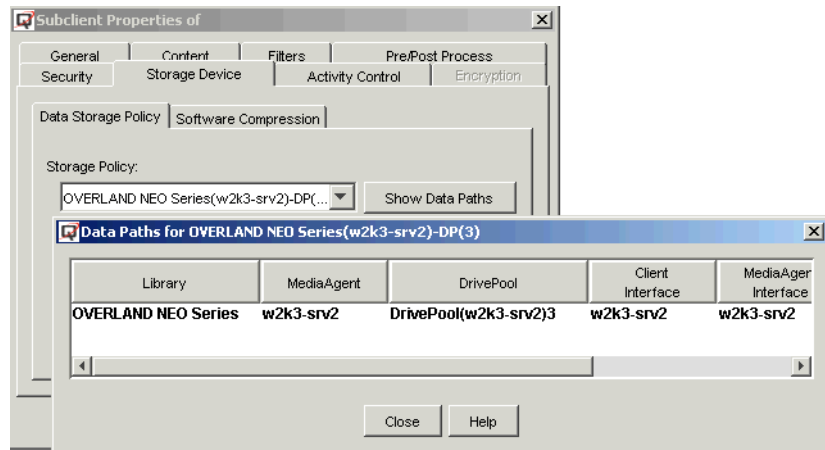
- On the **Content** tab, use the Browse button to locate and select the source that you want to back up, and then click **Add** to add the directory as part of the source.



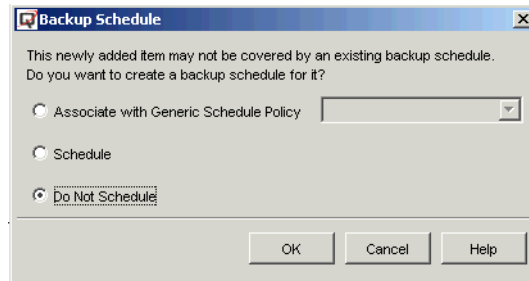
- On the **Storage Device** tab, select the **OVERLAND NEO Series** as the destination for backups.



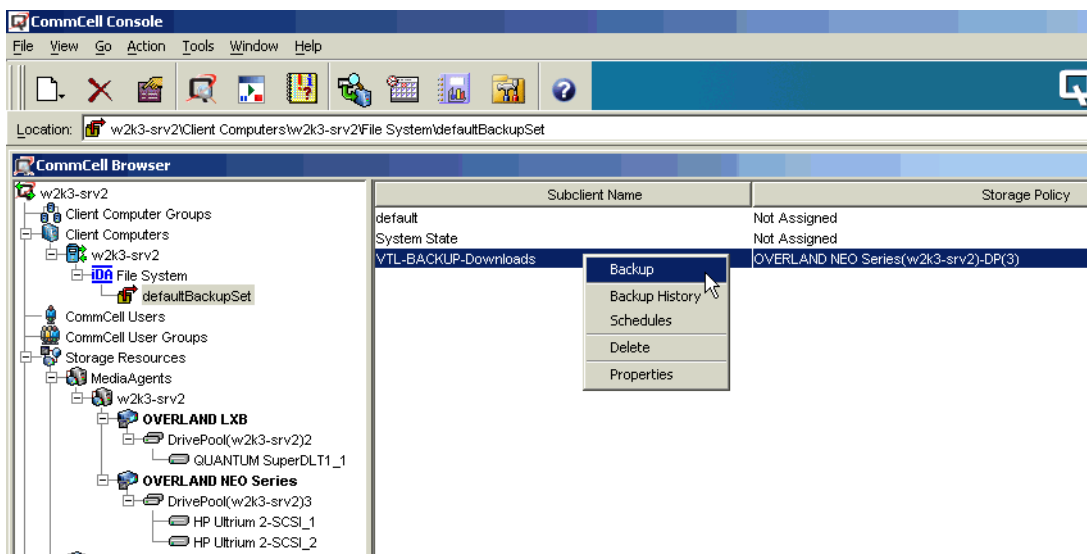
- 5 Click **Show Data Paths**, and verify that **Library** indicates the **OVERLAND NEO Series**.



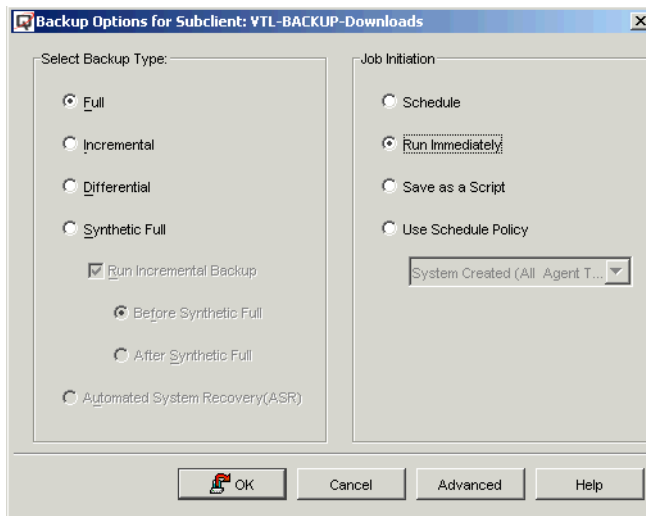
- 6 Click **Close** to dismiss the dialog box, and then click **OK** to save the changes for the Subclient.
- 7 When the **Backup Schedule** dialog box appears, set the schedule for this job, and click **OK** (to run the job now, select the Do Not Schedule option).



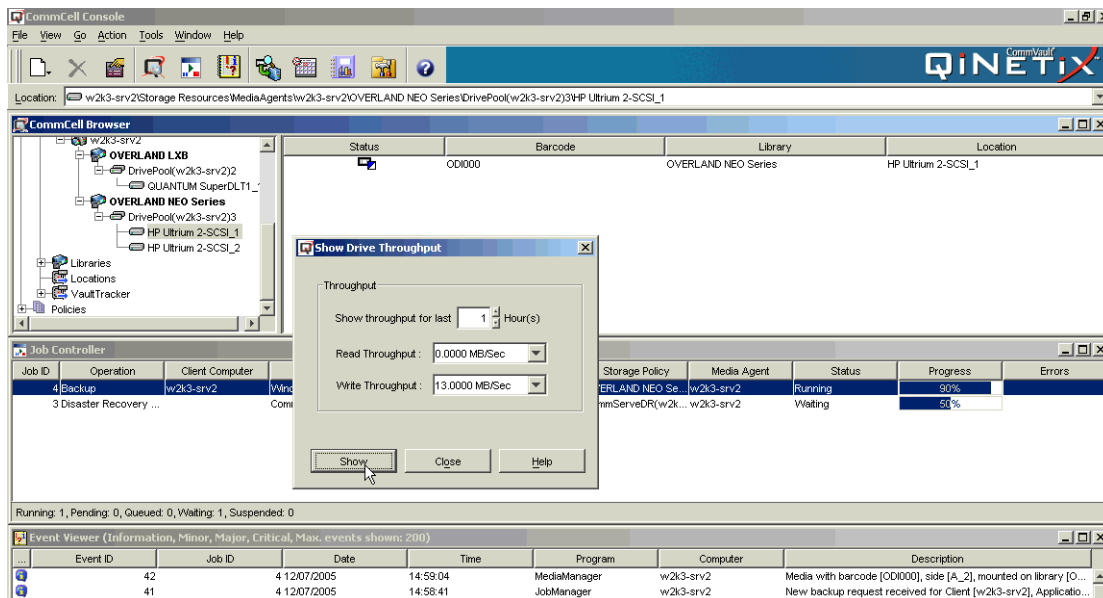
- 8 Right-click the new subclient, and select **Backup**.



- In the **Select Backup Type** section, select **Full**, select **Run Immediately** in the **Job Initiation** section, and then click **OK**.

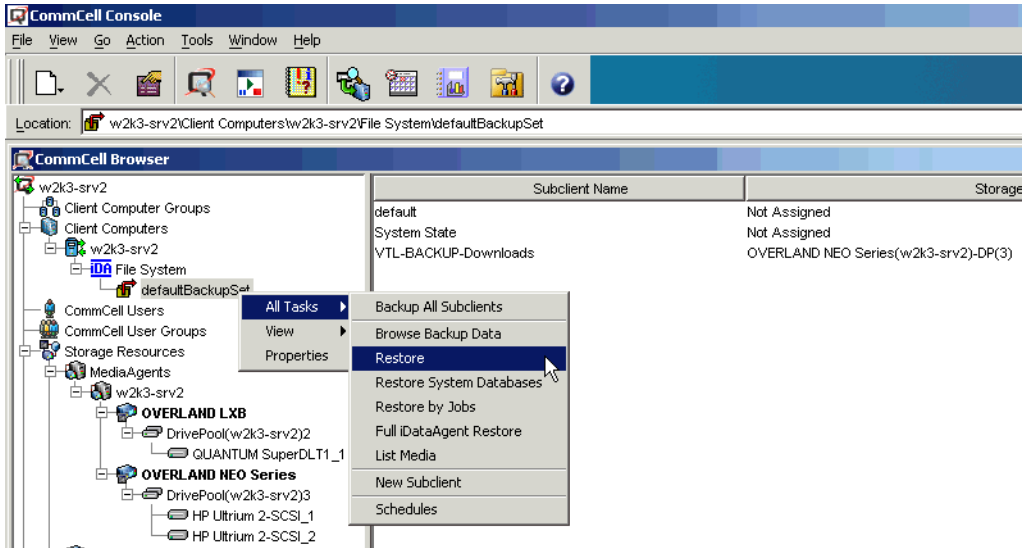


- Use the Job Controller to monitor the status of the backup job; to view performance, right-click the virtual tape drive that is loaded, and select throughput.

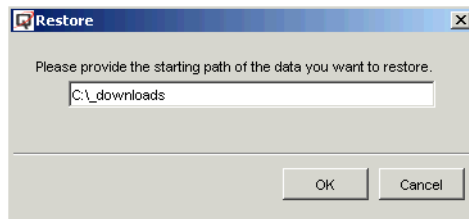


Creating a Restore Job

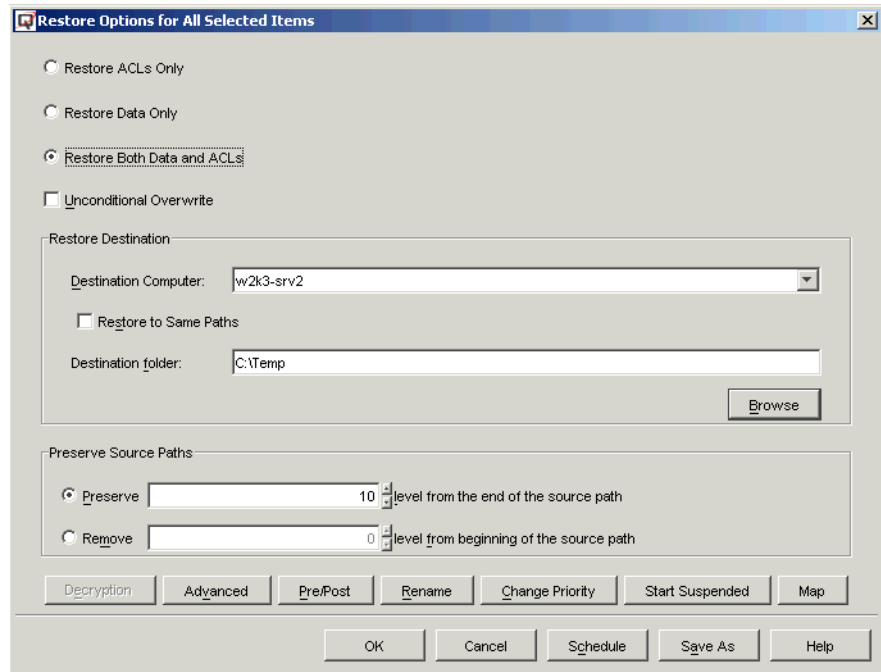
- 1 Right-click **defaultBackupSet**, select **All Tasks**, and select **Restore**.



- 2 Provide a path that points to the source you want to restore.

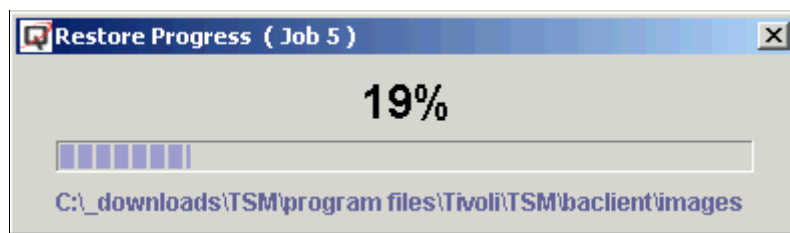


- 3 Select **Restore Both Data and ACLs**, and indicate whether to restore the files to the original location or to an alternate location.



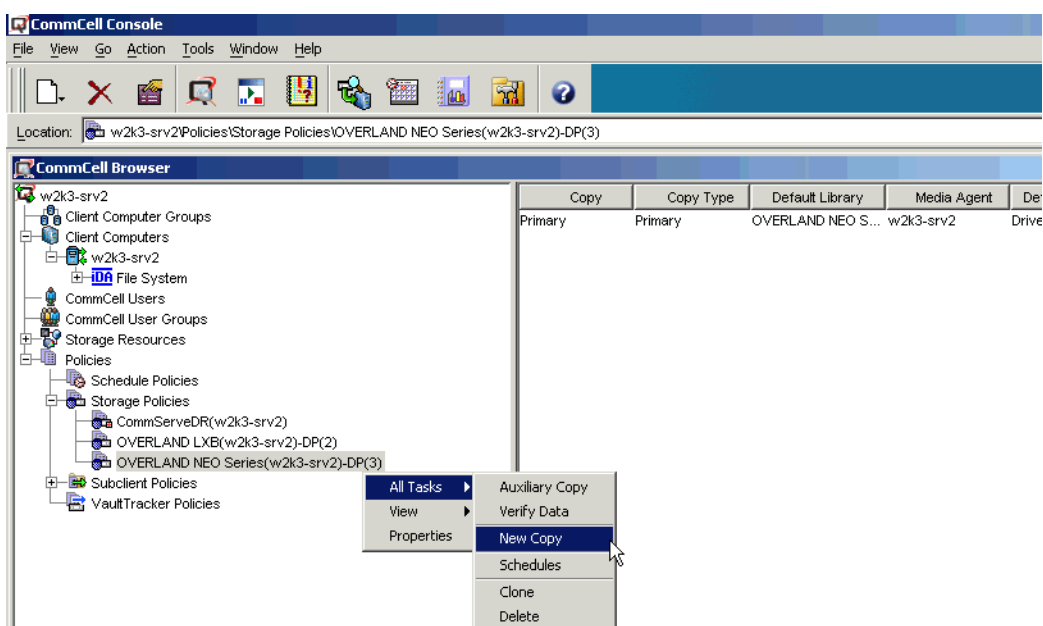
- 4 Click **OK** to start the restore.

The Restore Progress dialog box automatically appears.

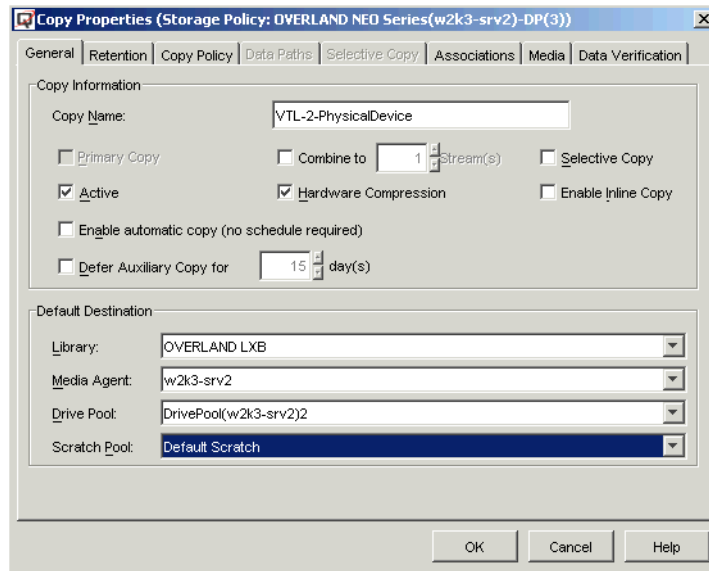


Configuring a Duplicate Job to Copy Data from the VTL to Physical Tape

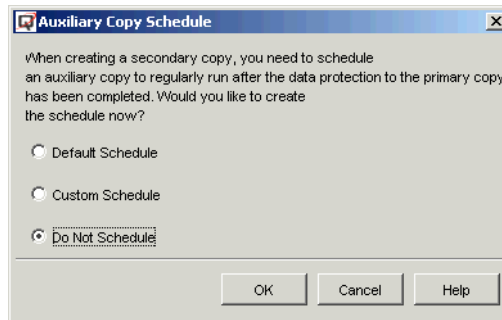
- 1 Expand **Policies** and **Storage Policies**, right-click **OVERLAND NEO Series**, select **All Tasks**, and then select **New Copy**.



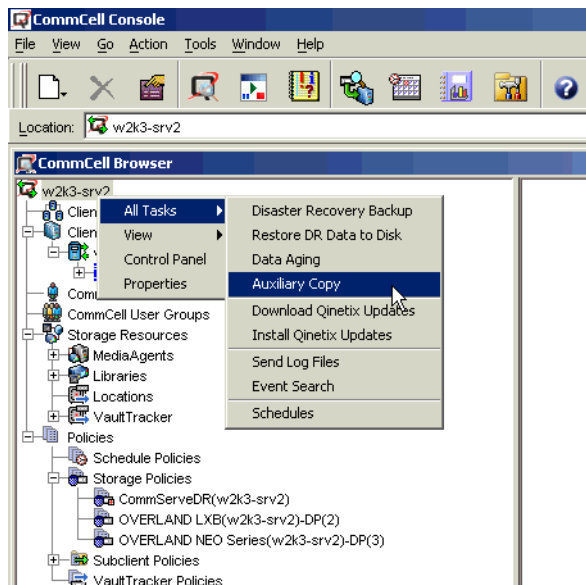
- 2 On the **General** tab, enter a **Copy Name**, select the physical tape library (PTL) from the drop **Library** list, select the **Media Agent** and the **Drive Pool**, and then click **OK**.



- 3 When the **Auxiliary Copy Schedule** dialog box appears, select the schedule for the copy job, and click **OK**.



- 4 Right-click the host server, select **All Tasks**, and then select **Auxiliary Copy**.



- 5 Select the OVERLAND NEO Series policy, select the copy job to run, and click **Run** to start the copy job.

